

Superfund Cleanup in the Hudson River: Where Are We?

An Update through the 2014 Season

Abigail M. Jones, Esq.
Hudson River Program Staff Attorney
Riverkeeper, Inc.
ajones@riverkeeper.org

November 11, 2014
Hudson River PCB Forum
Marist College, Cornell Boathouse

Hudson River Superfund – An Overview

- Location & Timing of GE's Contamination of Hudson River
 - GE factories in Hudson Falls and Fort Edward, NY
 - Dumped *at least* 1.3 million pounds of PCBs in Hudson from 1940s-1970s
- One of the Largest Superfund Sites in the Nation
 - 200 miles of Hudson River designated (Hudson Falls to Battery at NYC)
 - BUT: GE cleanup limited to 40 miles of Upper Hudson River (Fort Edward/Hudson Falls to Federal Dam in Troy) – NO remediation south of Troy Dam
- Legal Timeline
 - 1984 – Site Designation
 - 2002 – Record of Decision (ROD)
 - 2006 & 2009 – Consent Decrees
 - 2012 – Five Year Review

Hudson River NYSDOH Fish Consumption Advisory

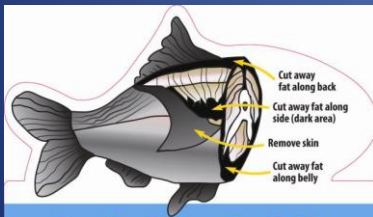
WARNING!

Fish and crabs from these waters contain chemicals and may be harmful to eat, especially for women and children.



Learn more!

Call NYS Department of Health
518-402-7800
800-458-1158



Cut the Fat to Cut PCBs

- PCBs are chemicals in the fat of some fish you catch.
- Don't pan-fry! Broil, grill or bake so fat drips away.
- Don't eat the green stuff in crabs.

Special advice for women and children: www.health.ny.gov/fish
(518) 402-7800 or 1-800-458-1158

2/98

New York State Department of Health

8/11



HUDSON FALLS TO TROY DAM

DO NOT EAT FISH FROM THIS PART OF THE WATER

DEC "catch and release" regulations apply:
All fish caught must be returned to the water unharmed



TROY DAM TO CATSKILL

WOMEN OF CHILDBEARING YEARS AND CHILDREN UNDER 15: DO NOT EAT FISH

Other people:

- Species that can be eaten once a month: alewife, blueback herring, rock bass, yellow perch
- Do not eat any other fish caught in this area

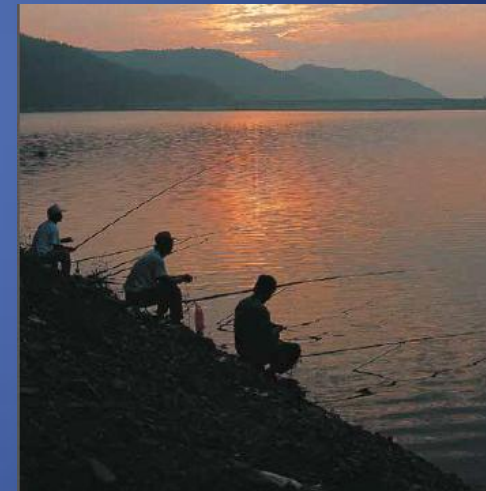


CATSKILL TO NEW YORK CITY BATTERY

WOMEN OF CHILDBEARING YEARS AND CHILDREN UNDER 15: DO NOT EAT FISH

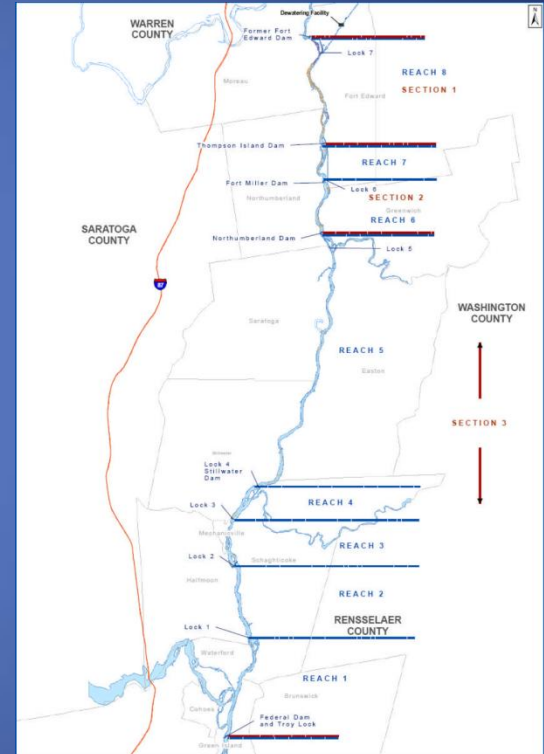
Other people:

- Do not eat white catfish, gizzard shad nor channel catfish; do not eat crab hepatopancreas and crab cooking liquid
- Species that can be eaten once a month: Atlantic needlefish, brown bullhead, carp, goldfish, largemouth bass, rainbow smelt, smallmouth bass, striped bass, walleye, white perch
- All other species can be eaten once a week including blue crab meat (six crabs per week)

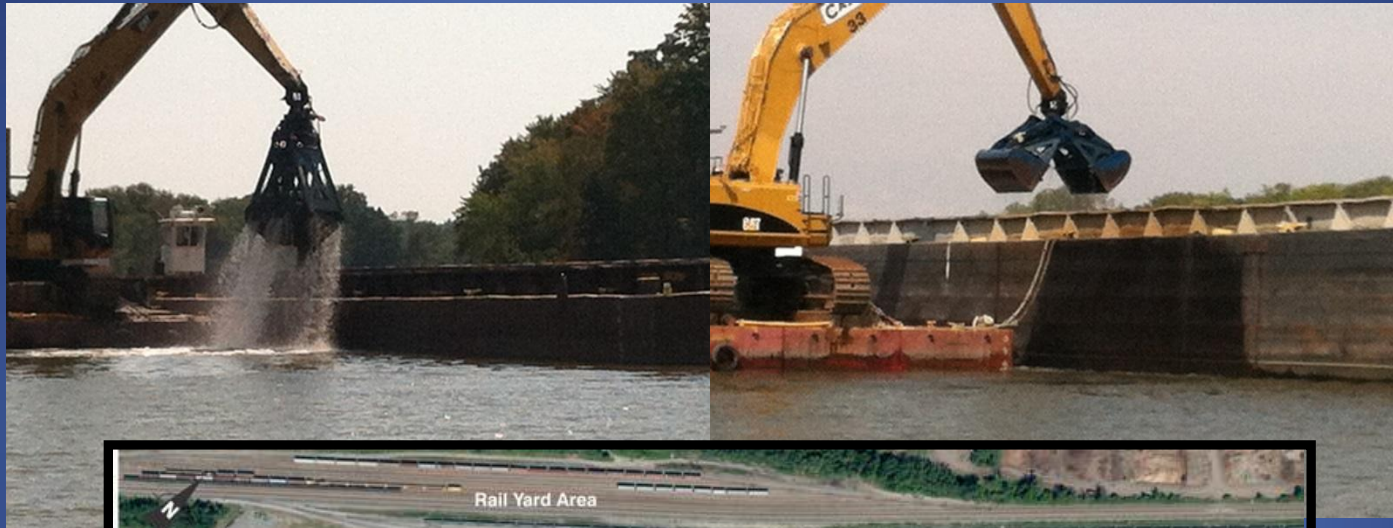


Remedial Plan for the Hudson River

- 2.65 million cubic yards of PCB-sediment to be dredged
- 2 Phases & 3 River Sections
- Varying Target Cleanup Levels
- Dredging of “Hot Spots” Only
- Limited Capping
- Habitat Restoration
- Engineering and QOL Performance Standards



GE Remediation of Hudson River Dredging Practices & Dewatering Facility



GE Remediation of Hudson River By the Numbers

- 5 Years, 2 Phases of dredging
- 2.5 million cubic yards dredged
- 75% dredged materials = TSCA
- 95 of 100 CUs completed
- 7.3% capped overall
- 31 acres total habitat seeded/replanted

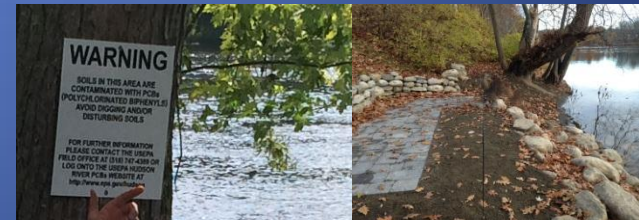
(As of October 30, 2014)

GE Remediation of Hudson River: So Where Are We?

- “Success” so far . . .
 - Greatly exceeded the expected amount of contaminated sediment to be dredged; Years ahead of schedule
 - Very little to no exceedances of water quality and air quality

BUT

- Navigation channel remains unmaintained for 30+ years
- Adverse impacts to both the recovery of the health of the river and the river-based commercial and recreational economic development opportunities
- Fish Consumption Advisories still in effect with no end date in sight
- Hindrance to the remedial objectives
- 136 acres of highly contaminated hot spots left behind hindering NRDA projects & leading to potential transport



GE Remediation of Hudson River: Where Do We Need to Go?

1. Remediation of Floodplains Area
2. 136 Acres & Navigational Dredging
3. Natural Resources Damages Assessment (NRDA)

For More Information on the Hudson River Superfund Cleanup

- **US Environmental Protection Agency (EPA):**
www.epa.gov/hudson/
- **Community Advisory Group (CAG):**
<http://www.hudsoncag.ene.com/>
- **NYS Dept. of Health (DOH):**
http://www.health.ny.gov/environmental/outdoors/hudson_river/
- **NYS Dept. of Environmental Conservation (DEC):**
<http://www.dec.ny.gov/chemical/8677.html>
- **Hudson River NRDA Federal Trustees:**
http://www.epa.gov/hudson/natural_resources.html